

Jonathan Yeo's Fear of the Portrait of King Charles

Aydın Türkgücü (14 June 2024)

When I first saw the controversial portrait of King Charles in the press and media, I thought “A King going through hell”. The King's head, unharmed in the flames, and his hands holding a sword, I interpreted as “the King still retains his sanity and strength despite all the difficulties the Royal family has been through in recent years”.

My interpretation of “A King going through hell” may be due to a news article I saw 10 days before the announcement of the King's portrait, which may have been perceptive.

While no one from the palace has commented on the details of Princess Kate's state of health, Prince William said that Princess Kate and her children's stylist made an off-the-cuff comment, “I'm heartbroken right now, I think they're going through hell, I hope they come back. This is a really personal situation.” The statement made news everywhere. Was this statement perception management to give a direction to the comments about the King's painting? I thought.

What are the hidden messages not mentioned in the video? You can read the story of the portrait in the interviews whose link I put in the description section. <https://www.businessinsider.com/hidden-details-king-charles-first-official-portrait-since-coronation-2024-5#charles-bright-red-uniform-is-from-the-welsh-guards-a-regiment-of-the-british-army-1>

When I read a statement by the British artist Jonathan Yeo, whose work received the royal seal of approval, I knew I had to see this portrait immediately.

Yeo said of his portrait of King Charles, “If this is seen as a betrayal, I would literally pay for it with my head.” He said. <https://www.vanityfair.com/style/story/the-butterfly-on-king-charless-new-portrait-was-his-own-idea>

As I say in my perception management trainings or analysis videos, works or statements are reflections of the subconscious minds of artists.

The fear and defiance in this sentence with the words “betrayal” and “I will pay for it with my head”
(1) Does it emphasize the risks involved in painting a portrait of a King?
(2) Or is it a challenge? Is there something disturbing about the portrait that betrays the King or the Kingdom?

I looked at Yeo's other work on his website, and seeing the collages of other famous people he has painted, I wondered if he might have done something with the King's portrait.

As an expert in perception management, I had to see this portrait urgently. I saw the portrait in person at the gallery where it was exhibited. Looking at the portrait carefully made me understand Yeo's fear.

I don't want anyone to get hurt, but I was curious about the hidden faces and symbols in the portrait.

Warning: After watching this video, you will never look at this portrait the same way again. Perhaps you will find other things that I did not see.

<https://www.jonathanyeo.com/king-charles-iii>

First of all, I would like to talk about the unmentioned aspect of a symbol that is clearly visible in the portrait.

One of the symbols seen at first glance in the portrait is a butterfly that is not quite placed on the King's right shoulder.

In an interview, Yeo said that the idea for the butterfly came from the monarch himself. "I said, when schoolchildren are looking at this in 200 years and they're looking at the who's who of the monarchs, what clues can you give them? He said 'What about a butterfly landing on my shoulder?'" the painter told the BBC. "In history of art, the butterfly symbolizes metamorphosis and rebirth." "In art history, the butterfly symbolizes transformation and rebirth." As mentioned in the description, the monarch butterfly is a symbol of positive transformation, especially in difficult times. It makes sense considering the period 2021-2023 when the portrait was painted.

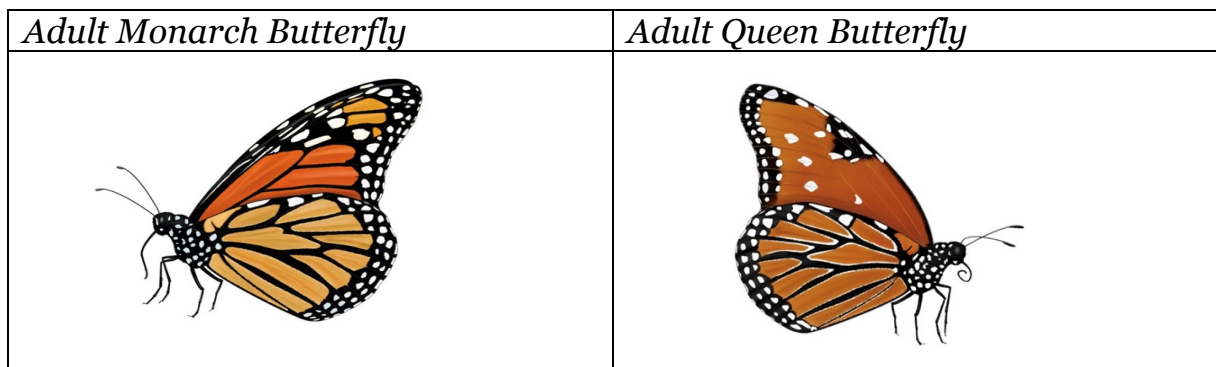
"The butterfly symbolizes Charles' evolution from prince to king," Yeo explained.

But there is a problem with the portrait. The butterfly is not placed on the King's shoulder as intended.

<https://www.businessinsider.com/hidden-details-king-charles-first-official-portrait-since-coronation-2024-5#charles-bright-red-uniform-is-from-the-welsh-guards-a-regiment-of-the-british-army-1>

Why might this be? Let's take a look at the portrait.

What's interesting is that there's a Monarch butterfly as well as a Queen butterfly. And they both look very similar. <https://www.wildflower.org/magazine/fauna/monarch-vs-queen>



One of the symbols most associated with the soul in ancient Greece is the butterfly. The main reason for choosing the butterfly as such a symbol is that it is a creature that undergoes metamorphosis.

<https://tr.wikipedia.org/wiki/Ruh>

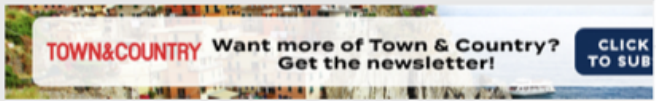
In many cultures, butterflies are believed to be the disembodied spirits of deceased loved ones. It is possible that a butterfly flying around you or landing on you is the spirit of someone you have lost. If you are still grieving for them, this encounter can bring you comfort. <https://www.spiritanimaltest.org/seeing-a-black-butterfly-spiritual-meanings/>

Butterflies symbolize disembodied souls. http://www.astroset.com/bireysel_gelisim/sembol/kelebek.htm

So for what purpose did Yeo use the butterfly in his portrait? Let's continue with the details to answer the question.

Interestingly, she has butterfly-shaped earrings and a necklace, which are referred to as Princess Diana's butterflies.

Prince Harry gives this jewelry, known as his mother Prince Diana's butterfly, to his wife Meghan Marcle as a wedding gift.



Style > Jewelry & Watches

Meghan Markle Just Wore Princess Diana's Earrings and Bracelet on the Royal Tour

The Duchess paid tribute to her late mother-in-law in Sydney.

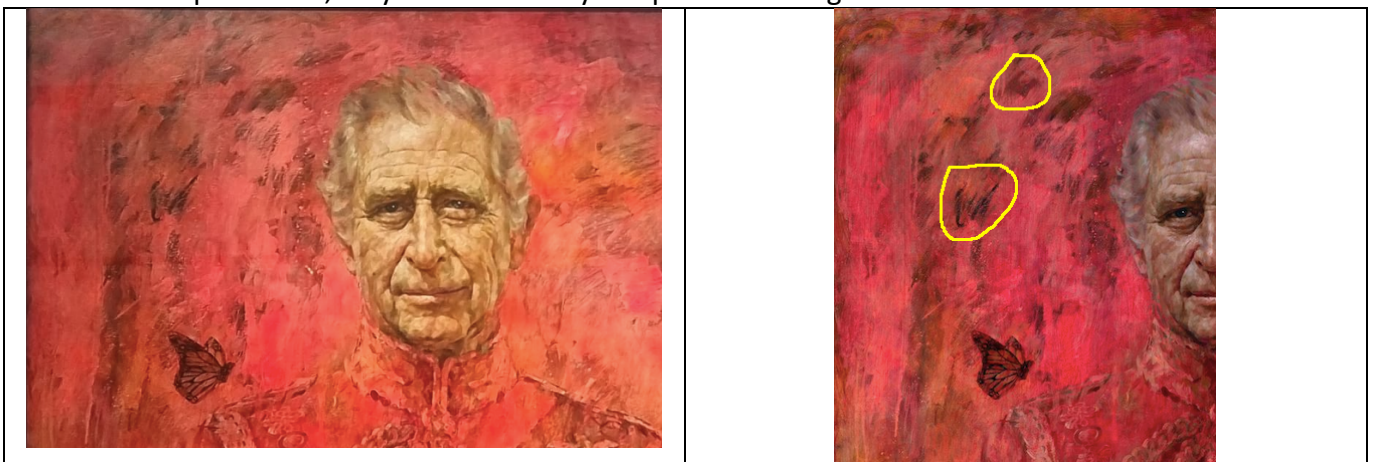
BY MAGGIE MALONEY PUBLISHED: OCT 16, 2018 12:42 PM EDT

SAVE ARTICLE



<https://www.thecourtjeweller.com/2022/03/princess-dianas-bejeweled-butterfly-suite.html>

As for the important clue in the portrait, a little above the butterfly in the portrait there is another symbol of a butterfly that is not yet fully embodied. The shadows going upwards seem to symbolize the connection of this butterfly with the afterlife. From this point of view, does this butterfly represent Diana's soul? Another question is, why is the butterfly not placed on King Charles' shoulder?



The black design of the butterfly symbolizes death and mourning. Is this black butterfly, not quite on the shoulder, a heartbroken Queen butterfly?



In my opinion, if the artist had painted the butterfly in its original colors then it would have symbolized the transformation better (just like in some of his portraits he draws things in their original colors).



Do you think this butterfly represents the spirit of Princess Diana? Or the transformation of King Charles? Why did the artist draw it like that? I would be interested in your comments.

The butterfly metaphor is best exemplified in the movie Patch Adams. The butterfly, representing the spirit of his recently deceased wife, lands on Adams' heart and binds him to life. The butterfly landing on the person is an expression that he continues to love her.



(2) HIDDEN FACES IN THE PORTRAIT

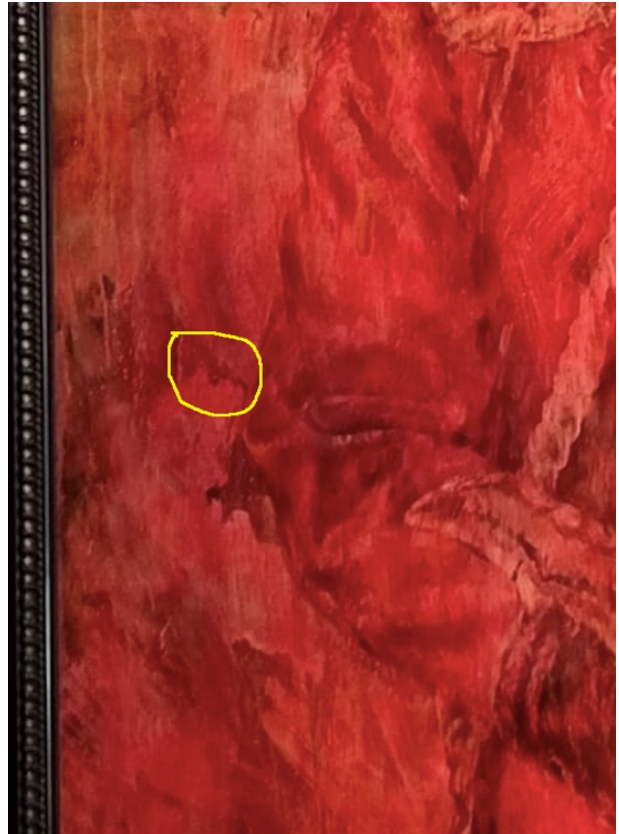
The Hidden Face of Satan

The second symbol in the portrait that catches the eye at first glance is the dragon symbol on the elbow of the King's right arm. I'll come to the dragon symbol in a moment. I want to draw attention to the face of Satan just behind the dragon symbol. See the eye hidden in the fold of fabric on the inside of the elbow of the right arm? In the crease of the sleeve. The other eye is just to the right, but it's not clearly visible. His mouth and nose are slightly obscured by the crest with the buttons on the sleeve. His cheek and chin extend below the crest on the sleeve. Now, do you see the horn just above the eye to the left and the other horn a little to the right of it? That's the secret face of the Devil in the Portrait revealed.

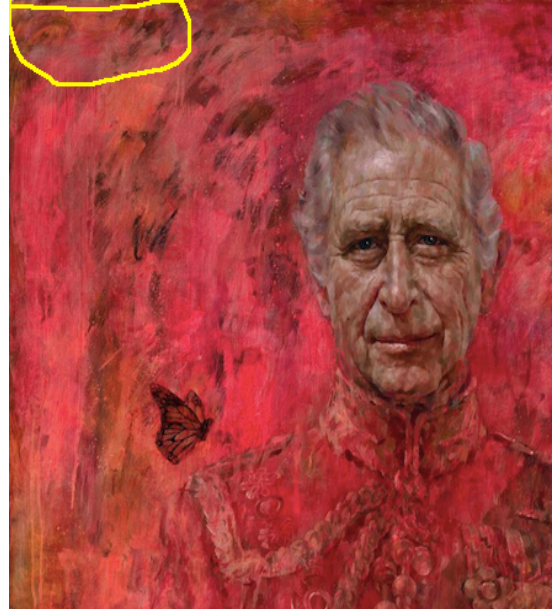


The human brain is generally programmed to make sense of what is easiest, what we call selectivity in perception. Therefore, it tends to see what it knows. If you are going to manage perception, you need to disguise the hidden symbol well. In this case, was the dragon placed there to hide Satan's face?

Again, did you see the angry eye just above the dragon?

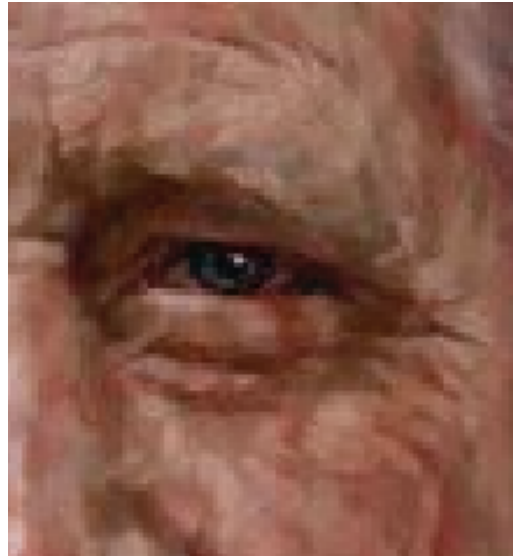
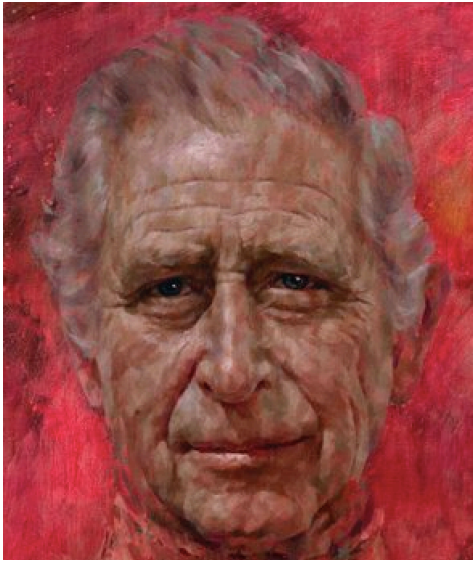


(.3) I wonder who the frightened eyes in the upper left corner of the portrait belong to.

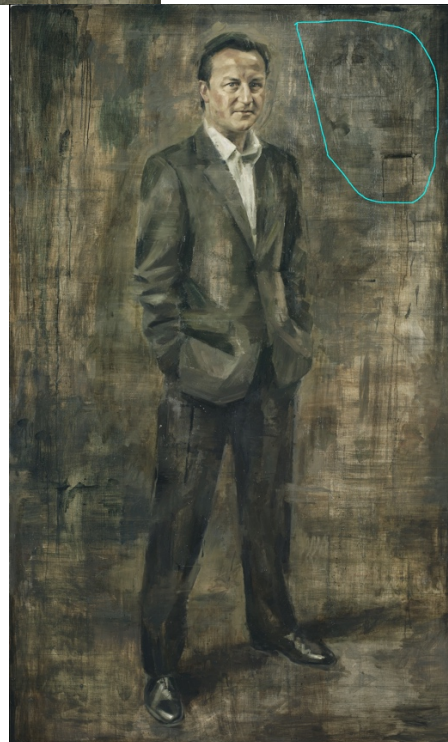


King Charles' bloody tear

When I looked at the King's right eye in the portrait, I was struck by the bloody tear flowing from the King's eye. When I look at the photos of the King on the internet, there is never such a trace. How should we interpret this?



There's a similar issue in a different way in James Cameron's portrait. Whose face is the hidden face with drool or blood coming out of its mouth?



Another striking detail in Cameron's portrait is that there is a second Cameron face behind Cameron. Does the artist mean that Cameron is not what he seems?

I wonder why Yeo designed this method, which I saw for the first time in a portrait?



This hidden face thing is a method that artists use a lot. I've seen a hidden face on 2 Pounds. Whose face or what face is it? Does anyone know?



King Charles' There is a vertical band just below the nose, which is visible when you look carefully. It looks clearer when you look closely at the portrait.

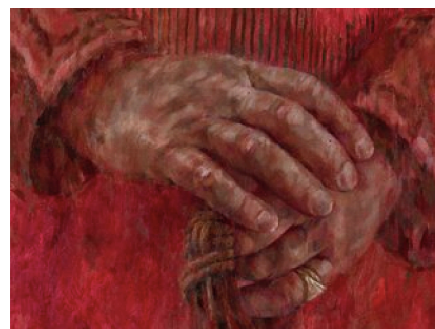


There is a noticeable reddened area under the right lower lip that is slightly protruding. Does this redness represent blood?



King Charles' Unhealthy Hands

Looking closely at the portrait, the unhealthy hands are also very noticeable. Don't they look like the hands of leprosy and psoriasis patients?



All the hidden details you missed in King Charles' first official portrait since his coronation

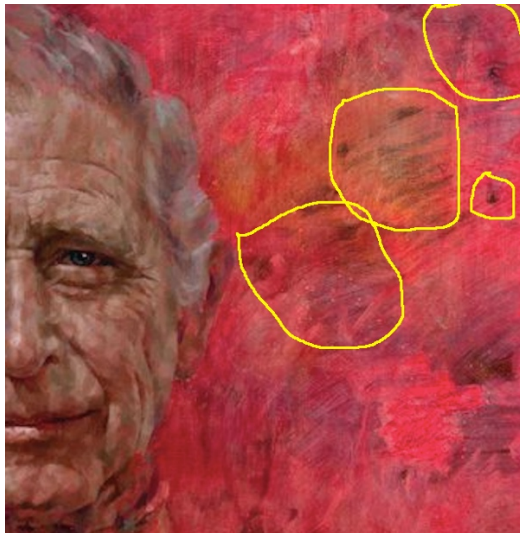
4) The rings on the King's and Queen's fingers are designed sideways. Who would want their ring to be slanted? Especially women. Didn't the artist approve of this marriage?



Whose face are the eyes in the lower left of the portrait?



Eyes and Faces in the Upper Right Corner of the Portrait



Queen Camilla's slightly downward-facing eyes I think this is the most important aspect of Queen Camilla's portrait. The forward looking eyes give the feeling of looking eye to eye with the sitter. It's as if the person in the portrait is standing in front of you. In this portrait, it gives the impression of a person looking away.





Another remarkable thing about Queen Camilla's portrait is that she is holding her glasses like a judge breaking a pencil. What makes me think so is that the right stem of the glasses is not visible in the portrait. Normally it should be visible. It looks like they are broken. It is very interesting that the arms are in the air. But that's not the Queen's pose.



The Dragon Symbol. I think this Dragon is a human-eating Dragon called La Gargouille.



<https://curiousrambler.com/a-saint-a-convict-and-a-gargoyle-go-into-a-swamp/>

Gargouille kelimesi eski bir Fransız efsanesiyle ilgili. Hikayeye göre, Seine Nehri yakınlarındaki bir mağarada yaşayan La Gargouille adında, uzun ve kıvrık boyunlu, güçlü çeneli, ürkütücü gözlü, devasa kanatlı bir ejderha vardı



Bu ejderha insanlarla besleniyordu. Gittiği her yerde kaosa neden oluyordu, yıkımı da beraberinde getiriyordu. Efsaneye göre ejderha, gittiği her yeri akıp yıktı.

<https://listelist.com/gargoyle-gotik-mimari-heykel/>

It is interesting that the color of the bottom of the shoes in the photo Yeo took while making the portrait and chose to put on the website is the same as the main color of the portrait.



Is the shirt Yeo is wearing in the promotion of the portrait Virus patterned?



What do you think?

"If this is seen as a betrayal, I would literally pay for it with my head," Yeo said about his portrait of King Charles. Quote

- (1) Does it emphasize the risks involved in painting a portrait of a King?
- (2) Or is it a challenge?

I would be interested in your comments.

News and sources about the portrait can be found in the links in the description.

A high quality photographic copy of the portrait is available at the link in the description.
Please share your comments.

<https://www.jonathanyeo.com/king-charles-iii>

<https://philipmould.com>

<https://www.businessinsider.com/hidden-details-king-charles-first-official-portrait-since-coronation-2024-5#charles-bright-red-uniform-is-from-the-welsh-guards-a-regiment-of-the-british-army-1>

<https://www.vanityfair.com/style/story/the-butterfly-on-king-charless-new-portrait-was-his-own-idea>

<https://www.jonathanyeo.com/king-charles-iii>

<https://www.wildflower.org/magazine/fauna/monarch-vs-queen>

<https://tr.wikipedia.org/wiki/Ruh>

<https://www.spiritanimaltest.org/seeing-a-black-butterfly-spiritual-meanings/>

http://www.astroset.com/bireysel_gelisim/sembol/kelebek.htm

Portrait of HM King Charles III by Jonathan Yeo Unveiling on ITV News at 10

<https://listelist.com/gargoyle-gotik-mimari-heykel/>